

The Dirty Data Guide: Unlocking the Power of Clean Data

Table of Contents

- 3-4 **Chapter 1:**
Understanding What Makes Bad Data
- 5-6 **Chapter 2:**
The Impact of Dirty Data vs. The Benefits of Clean Data
- 7-9 **Chapter 3:**
Implementing Data Hygiene Practices for Success
- 10 **Chapter 4:**
Focusing On Long-Term Data Health
- 11-12 **Chapter 5:**
Leveraging Data Insights for Continuous Improvement
- 13 **Chapter 6:**
Putting It All Together: From Clean Data to Strategic Success
- 14 **Chapter 7:**
Data Hygiene Action Checklist



The Importance of Data Hygiene for Powerful Data Insights

Accurate, high-quality data forms the foundation of every successful data-driven strategy. Without it, organizations risk making flawed decisions based on incomplete or incorrect information, leading to ineffective member engagement and missed revenue opportunities. This is where good data hygiene becomes essential—particularly for those relying on tools like Data Insights.

Integrated directly with **MemberClicks Trade AMS**, **Data Insights brings advanced reporting and analytics powered by AI. However, its effectiveness hinges on the quality of your data.** Clean data empowers Data Insights to deliver actionable insights, enabling you to make confident decisions that drive organizational success. It's like having a dedicated analyst on your team, transforming complex information into clear answers.

Consider these eye-opening statistics: (Source: Sirius Decisions)

25%

of marketers reported that their average database's records were inaccurate.

60%

of marketers rated their data health as unreliable.

80%

of marketers weren't confident in their phone contact records.

These numbers highlight the risks of neglecting data hygiene. Poor quality data hinders decision-making and undermines member engagement. It also threatens your organization's bottom line. Clean data, on the other hand, opens the door to smarter strategies and better results.

In this guide, we'll explore the critical role of clean data, practical strategies for maintaining data hygiene, and how Data Insights transforms your data into a strategic advantage.

Understanding What Makes Data Bad

In the past, poor data quality was easier to diagnose. A single system—like a CRM, donor management software, or AMS—handled most organizational tasks. Today, with multiple interconnected systems powering nonprofits and associations, the causes of bad data remain largely the same, but the complexity has increased. Addressing this complexity starts with recognizing the most common culprits.

Common Data Issue #1

Inaccurate Data: When Information Is Incorrect or Outdated

Inaccurate data occurs when information is entered incorrectly, not updated, or recorded improperly. This can create communication errors, waste resources, and lead to missed opportunities. **For example:**

- Returned mail marked "address unknown" because a member moved without updating their details.
- Outdated phone numbers leading to failed outreach attempts.
- Incorrect email addresses resulting in undelivered messages.

When inaccurate data exists, your messages—whether emails, phone calls, or texts—don't reach their intended audience. This wastes time, money, and opportunities to engage or retain members.

Common Data Issue #2

Inconsistent Data: When Similar Data Is Stored In Different Formats

Inconsistent data happens when similar information is stored in varying formats across records. These discrepancies make it harder to analyze data, causing unreliable insights and performance issues. **For instance:**

- One record uses "Boulevard," while another uses "Blvd."
- Formatting differences in phone numbers or email addresses.

These inconsistencies not only reduce database reliability but also lead to:

- Duplicate records that complicate communication.
- Errors in personalization that impact the quality of member engagement.

When your data isn't consistent, it becomes difficult to make accurate strategic decisions or plan for growth.

Common Data Issue #3

Duplicate Data: When One Contact Appears in Multiple Records

Duplicate data occurs when the same contact is added multiple times, often due to human error or system syncing issues. This problem leads to wasted resources and confusion for both your team and your members. **For example:**

- A member forgets their login information and creates a new account, resulting in duplicate profiles.
- A contact is manually entered into multiple systems, creating redundancies.



Duplicate data not only skews your metrics but also causes:

- Overcommunication with members, such as receiving multiple renewal notices.
- Inefficient resource allocation, as your team spends time fixing the issues.

Recognizing these three common data issues helps ensure your information is accurate and ready for tools like Data Insights.



Segmentation Model Field Options

Segmentation Model Exclude All Categorical Data

Field Name (check fields to exclude from model)

revenuelastyearmember

participation

barcount

ount



The Impact of Dirty Data vs. The Benefits of Clean Data

Understanding the challenges of inaccurate, inconsistent, and duplicate data reveals how poor data quality limits more than just daily operations. It limits your ability to make informed, strategic decisions. Dirty data reduces your ability to gain valuable insights, leading to missed opportunities and inaccurate decisions.

In contrast, clean data amplifies opportunities, allowing your organization to make confident, strategic decisions. It enhances member engagement, streamlines operations, and ensures compliance with regulations like GDPR and CAN-SPAM, safeguarding both your reputation and member trust.

The table below highlights how dirty data hinders your operations, while clean data ensures reliable, actionable insights for better decision-making and long-term success.

Category	Dirty Data	Clean Data
Member Engagement	Messages fail to reach members, leading to ineffective communication and skewed metrics.	Communications are accurate, personalized, and more likely to resonate with members.
Revenue Tracking	Duplicate or incomplete records distort revenue insights and hinder financial planning.	Reliable data ensures precise revenue tracking and a clear picture of organizational financial health.
Predictive Analytics	Poor data quality results in unreliable forecasts and missed opportunities.	Accurate data supports dependable forecasting for retention, growth, and revenue trends.
Event Planning	Inaccurate attendance metrics make future planning more challenging.	Accurate data highlights participation trends, enabling improved event strategy and success.
Operational Efficiency	Time spent correcting errors reduces focus on strategic initiatives.	Streamlined processes and accurate records free your team to focus on high-impact activities.

Clean Data Doesn't Just Power Better Analytics

It protects your organization from compliance missteps, builds trust with members, and improves your ability to act on insights with confidence. In today's data-driven landscape, ensuring the reliability of your data is more than a necessity. It's a strategic advantage.

The staggering financial impact of poor quality data highlights the importance of clean, reliable data in reducing waste and optimizing resources, empowering organizations to act with confidence and precision.

Beyond operational benefits, clean data reduces your organization's vulnerability to compliance risks. Accurate contact records ensure that communications align with opt-in policies, while streamlined processes help avoid penalties for regulatory violations. In an era where data privacy and security are paramount, data hygiene safeguards your reputation and builds trust with members.



Studies estimate that poor quality data costs businesses an average of

\$9.7
million annually

(Source: Forbes.)

Focusing on data hygiene is more than just addressing immediate challenges. It's about building a long-term strategy for success.

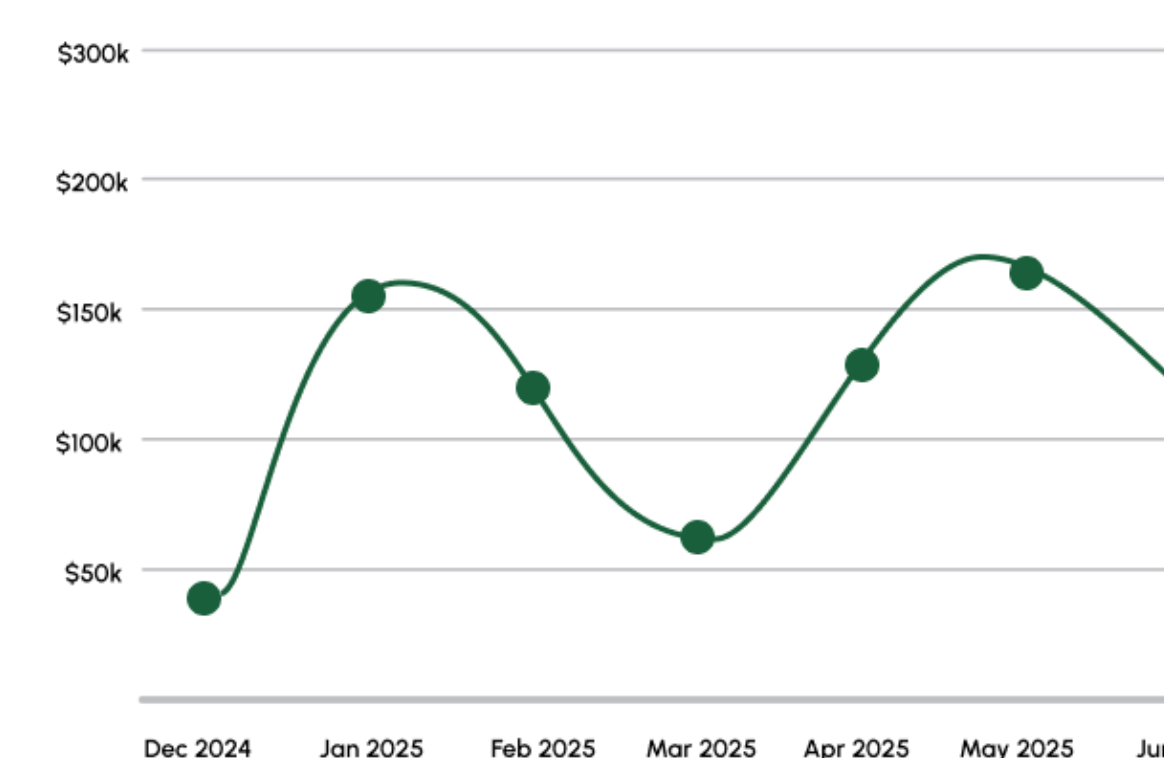
Paired with Data Insights, clean data empowers your organization to engage more effectively with members and achieve your goals with precision and confidence.

Forecasting

[Download Data](#)

DATE	DUES	NON-DUES
Dec 2024	\$10,264.30	\$10,264.30
Jan 2025	\$10,264.30	\$10,264.30
Feb 2025	\$10,264.30	\$10,264.30
Mar 2025	\$10,264.30	\$10,264.30
Apr 2025	\$10,264.30	\$10,264.30
May 2025	\$10,264.30	\$10,264.30
Jun 2025	\$10,264.30	\$10,264.30

Predicted Revenue



Implementing Data Hygiene Practices for Success

To fully leverage the capabilities of Data Insights and MemberClicks Trade, a strong data hygiene strategy is essential. Maintaining clean and accurate data is not just about addressing existing issues; it involves fostering a culture and implementing processes that prioritize ongoing data quality.

Did you know that contact data decays at an average rate of

2%
per month
adding up to
25-30%
annually?

(Source: Dun & Bradstreet.)

This natural data degradation highlights the need for proactive data hygiene practices to prevent inaccuracies, inconsistencies, and duplicates from accumulating over time.

Below Are Key Practices To Guide Your Organization:

Standardization of Data Entry

Create clear, consistent guidelines for entering information, including standard formats for addresses, phone numbers, and other fields.

- **For instance, decide uniform formats** for addresses and other commonly used fields consistently across all records.
- **Train your team** to follow these standards, ensuring reliable records that drive accurate insights from the start.

Regular Data Audits

As part of your initial strategy, conduct regular reviews to address outdated, incorrect, or inconsistent data before it accumulates.

- **Use audits** as an opportunity to proactively address potential data quality issues.
- **Employ tools** to help flag anomalies and detect trends in missing or inaccurate data, prioritizing areas that require immediate attention.

Deduplication

Duplicate records can distort metrics and confuse communications.

- **Schedule routine deduplication efforts** to consolidate records and maintain a single, accurate profile for each contact.
- **Leverage automated processes** to identify and merge duplicate entries more efficiently.

Validation Tools and Automated Processes

Introduce tools that validate data during entry to minimize errors.

- **For example, automated address verification** ensures accuracy when adding new contacts.
- **Automated systems can also flag incomplete fields** or inconsistencies before saving, reducing the need for manual corrections.

Training and Empowerment

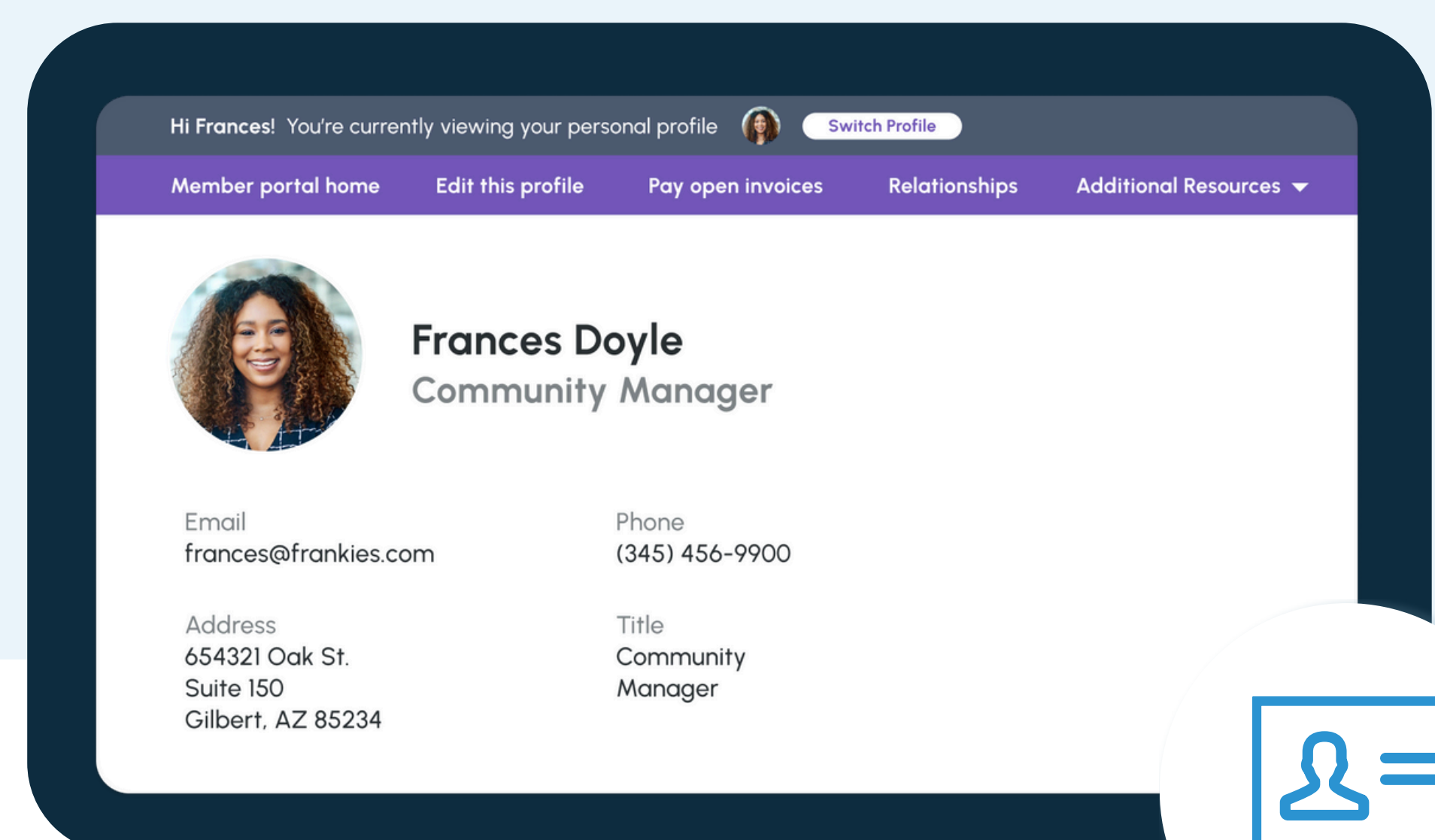
Start with focused training sessions to equip your team with the skills and tools for immediate improvements in data quality.

- **Offer training on best practices** for data entry, maintenance, and validation.
- **Emphasize how their efforts directly contribute to organizational success**, fostering a sense of shared responsibility.

Empowering Members to Maintain Their Own Data

Your members can play a significant role in keeping their contact information accurate and up to date. By enabling them to manage their own data, your organization can reduce manual updates and improve overall data quality. **Here's how:**

- **Member Login Access:** Allow members to log in and update their contact information, manage employee records, and adjust organizational details if they have appropriate permissions (e.g., Editors of a member organization).
- **Email Campaigns:** Encourage members to update their profiles through regular email campaigns. Highlight the benefits of maintaining accurate information, such as improved access to member benefits and streamlined event registration.
- **Access Incentives:** Implement restrictions on member pricing for events or benefits unless their data is complete and accurate. This encourages members to log in, update their records, and stay engaged.



Proactively Preventing Bad Data

Stopping errors before they enter your system is the most effective strategy for maintaining long-term data health.

- **Clearly Define Job Roles:** Establish clear data management responsibilities within your team to ensure accuracy and consistency. Assign specific roles for data entry, validation, and review to streamline processes and reduce errors.
- **Real-Time Validation:** Set up system alerts to flag invalid entries, such as incomplete fields or duplicate records, at the point of entry.
- **Source Integration Reviews:** Regularly evaluate external integrations to ensure they adhere to your organization's data quality standards.

These measures minimize errors and free your team to focus on strategic initiatives rather than data cleanup.

These practices establish a culture of data integrity, ensuring your organization consistently benefits from accurate, reliable data to support strategic decisions and long-term success. However, building a culture of accountability does not stop with initial practices. It requires ongoing commitment and proactive measures, which we will explore in the next section on maintaining long-term data health.



Need Help with Data Cleanup?

Our Professional Services team offers expert guidance to prepare and clean your data, ensuring it's optimized for success with Data Insights. With their support, you can confidently harness the power of clean data to drive organizational success.

[Learn more or contact us today.](#)

For a step-by-step breakdown of these practices, see the [Data Hygiene Action Checklist](#) at the end of this guide. It provides a quick reference tool to help your team implement and maintain high-quality data practices effectively.

4 Focusing on Long-Term Data Health

While implementing strong data hygiene practices sets a solid foundation, maintaining data quality over time requires ongoing commitment and proactive strategies. Long-term success depends on processes, tools, and a culture that prioritizes accountability and continuous improvement.

Key Strategies for Long-Term Success

- **Regular Audits:** Periodically review your database to identify outdated, incorrect, or inconsistent data.
- **Data Updates:** Ensure member details—such as contact information and preferences—are consistently updated to reflect the most current information.
- **Cross-System Alignment:** Evaluate third-party systems to ensure consistent data entry and synchronization across platforms.
- **Team Accountability:** Over time, designate team members as data stewards to ensure accountability and shared responsibility for ongoing data health.



Routine Data Maintenance

Long-term data health relies on regular updates to member contact information, such as addresses, emails, and phone numbers. Establishing a routine for ongoing data maintenance ensures your organization always works with the most accurate, up-to-date information. This consistency enhances your ability to make informed decisions and improves member engagement.

Reliable tools enable your team to flag anomalies, track trends, and address gaps in real time. However, sustained success relies on an organization-wide commitment to maintaining high-quality data and fostering accountability.

Leveraging Data Insights for Continuous Improvement

Data Insights within MemberClicks Trade transforms your clean, high-quality data into actionable insights that empower your organization to make informed decisions and achieve strategic goals. The success of any reporting tool, including Data Insights, depends on clean, reliable data. High-quality information ensures accurate analysis, enabling your organization to act on insights with confidence.



Tracking Trends and Identifying Opportunities

Data Insights works seamlessly to provide a consolidated view of your data. By analyzing trends and patterns, it helps highlight areas that need attention, ensuring that your team can take corrective action effectively.



Predictive Data Analysis

By using clean, high-quality data, Data Insights supports predictive modeling, helping you identify at-risk members, forecast trends, and anticipate revenue opportunities. These insights allow your organization to act proactively, addressing challenges and seizing opportunities before they arise.



Actionable Answers and Suggested Questions

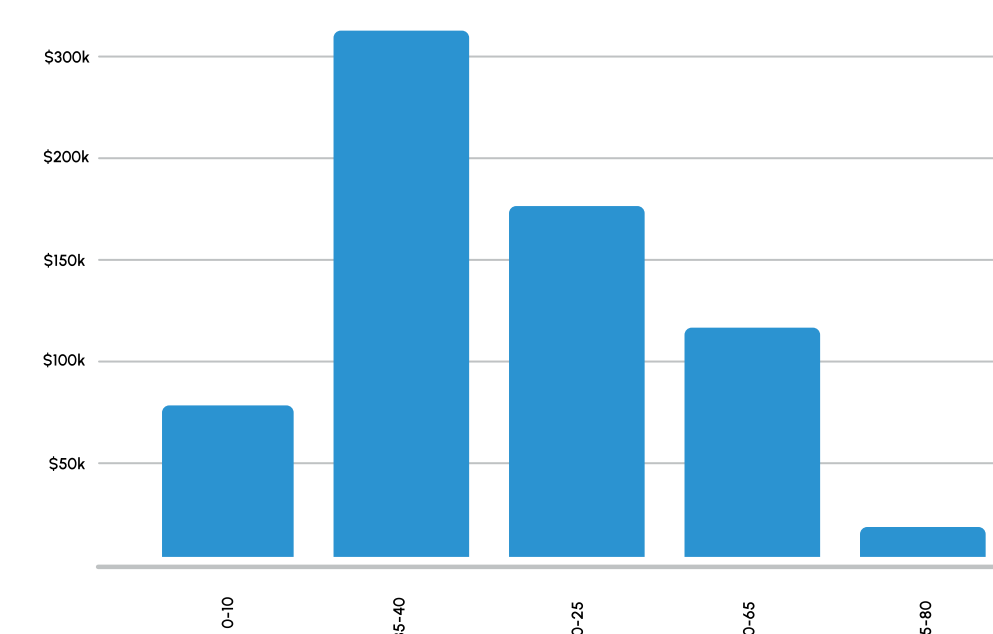
Data Insights allows you to ask specific questions about membership and profile data, revenue, payments, and event registration. It provides detailed answers and even suggests additional questions to deepen your understanding of your data, helping your organization spot opportunities and address potential gaps.

How does member age correlate to annual dues?

Answer:

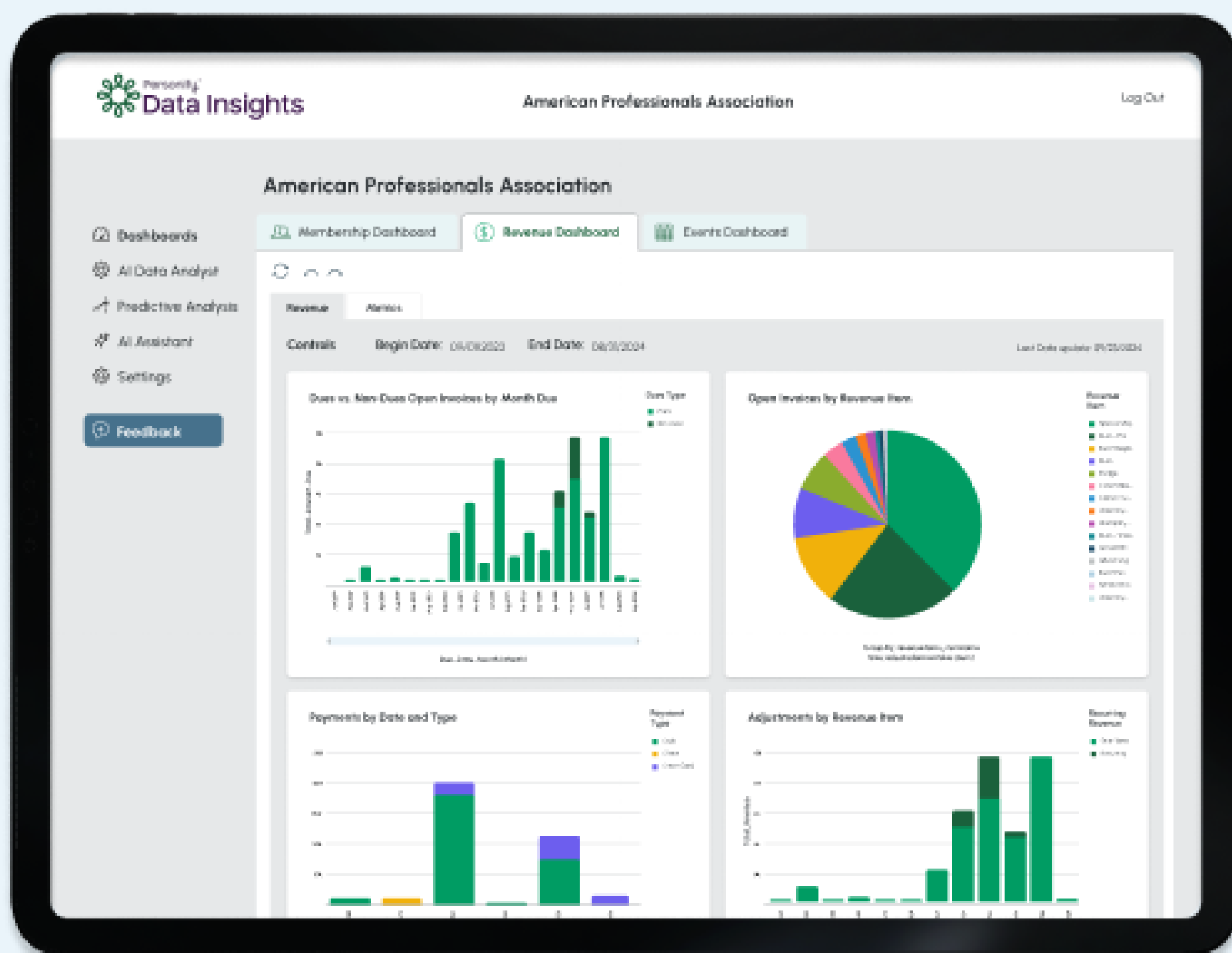
The total annual dues collected is \$2,180,774. There are 39 distinct member age groups. The member age group with the highest total annual dues is age 35-40, contributing \$309,490.

[Review for accuracy](#)





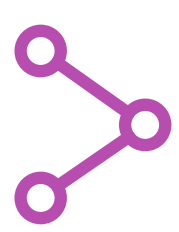
Data Visualization



With a wide variety of visualizations, Data Insights transforms complex datasets into clear visuals that allow for the comparison and cross-referencing of different data sets, highlighting key organizational metrics. The tool makes it easy to analyze data visually and understand metrics effectively.

Data Insights is most effective when powered by clean, reliable data.

By prioritizing data hygiene and leveraging its robust analysis and reporting tools, your organization can confidently make decisions that align with your mission and drive success.



Cultivating a Data-Driven Culture

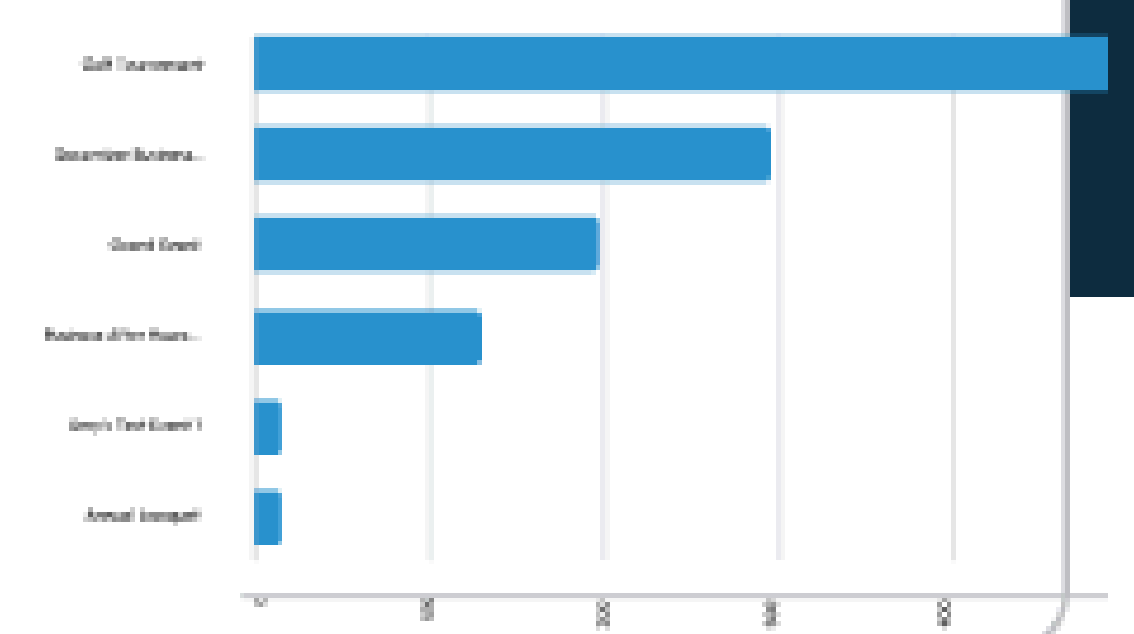
By emphasizing the importance of clean data, Data Insights fosters a culture of transparency and collaboration. Encouraging teams to rely on data-driven insights for strategic decisions makes quality data a shared organizational priority.

Which events brought in the most revenue in the past year?

Ask

Answer:

In 2023, the total AdjustedLineItemAmount across all events amounted to \$1,015,30. There were 6 unique event names during this period. The event that contributed the highest AdjustedLineItemAmount was the 'Call Insurance' event, bringing \$625.



Putting It All Together: From Clean Data to Strategic Success

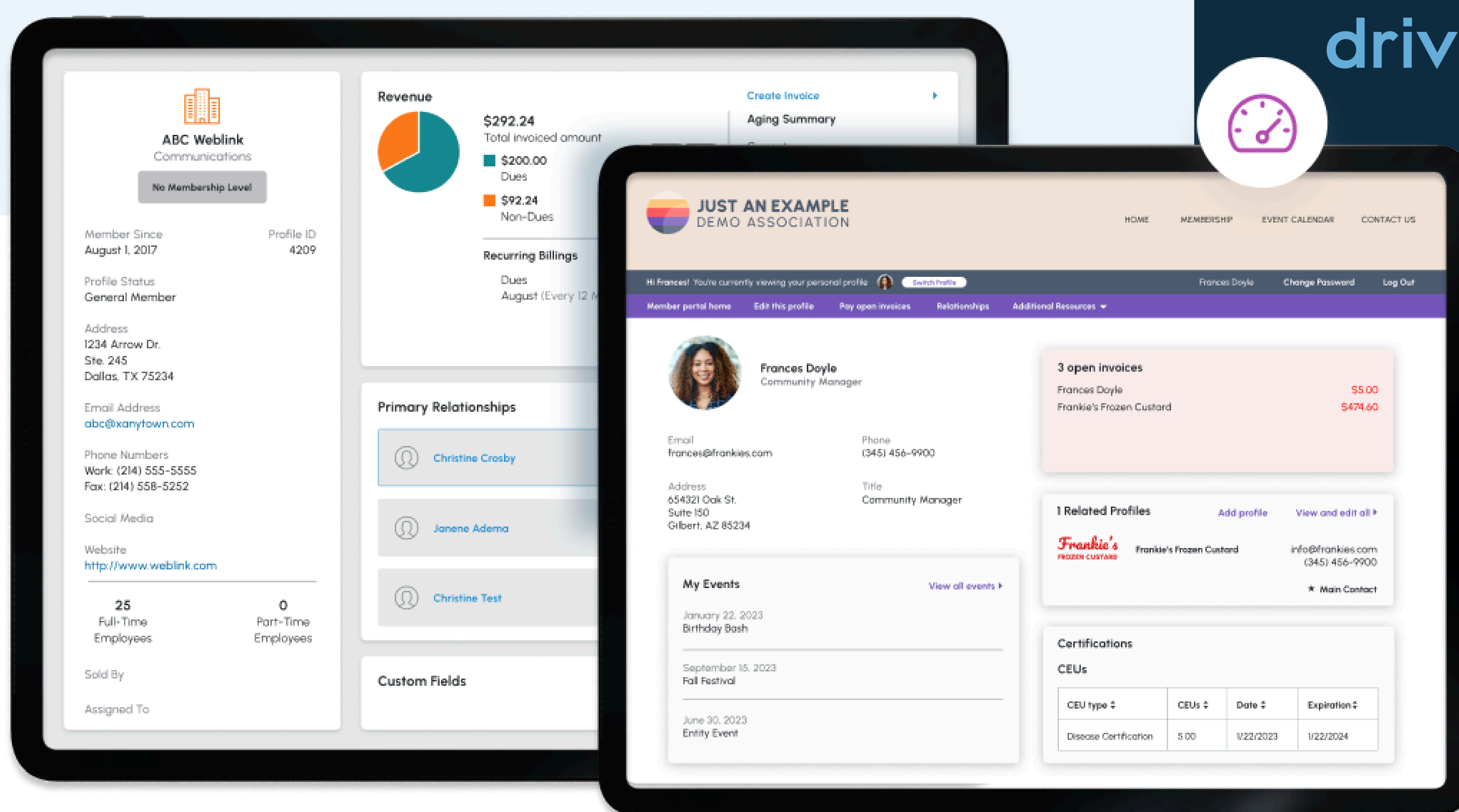
Throughout this guide, we've emphasized the critical role of clean, high-quality data in unlocking the full potential of Data Insights. When paired with a robust data hygiene strategy, Data Insights empowers your organization to transform raw information into actionable strategies that drive meaningful change.

Key Takeaways

- **The Foundation of Success:** Clean data is the key to accurate insights, enabling your organization to make informed decisions with confidence.
- **A Unified Solution:** Data Insights integrates seamlessly with MemberClicks Trade AMS, transforming your data into a valuable resource for forecasting trends, improving member engagement, and enhancing operational efficiency.
- **A Long-Term Commitment:** Data hygiene is more than a task; it's a cultural shift. Regular audits, timely updates, and preventive measures ensure your data stays accurate, actionable, and aligned with your goals.

By aligning your data strategy with these principles, you create a foundation for lasting success.

Data Insights is not just a tool. It is a strategic partner that helps your organization fulfill its mission, meet its goals, and thrive in an increasingly data-driven world.



✓ Data Hygiene Action Checklist

To help your team get started, this checklist offers a step-by-step guide to implement and maintain high-quality data. It consolidates the key actions from this guide into a practical tool, ensuring your team stays aligned with data hygiene best practices.

Set Standards for Data Entry

- Define consistent formats for common fields (e.g., addresses, phone numbers, names).
- Communicate standards with training sessions and written guidelines.

Audit Your Database Regularly

- Schedule quarterly or biannual reviews to identify outdated or inaccurate data.
- Use tools to flag missing or inconsistent information for review.

Remove or Merge Duplicate Records

- Run duplicate detection reports to identify redundant profiles.
- Consolidate duplicates into a single, accurate record.

Clearly Define Job Roles

- Assign specific responsibilities for data entry, validation, and review to your team.

Validate Data at the Point of Entry

- Use automated tools to verify fields like emails, phone numbers, and addresses.
- Flag incomplete or incorrect entries before saving.

Encourage Members to Update Their Own Data

- Empower members to log in and update their profiles, contact details, and organizational information.
- Use email campaigns and automated reminders to encourage updates. Highlight the benefits of maintaining accurate information, such as improved event pricing or access to member benefits.

Monitor and Maintain Data Health

- Assign team members as “data stewards” to oversee accuracy and regular updates.
- Establish processes for regularly updating member contact details.

Ready to take the next step?

About MemberClicks and How We Can Help

At MemberClicks, we understand the challenges organizations face when it comes to managing and maintaining high-quality data. That's why we've built tools like Data Insights, seamlessly integrated into MemberClicks Trade AMS, to empower organizations to make smarter, data-driven decisions.

Whether you're looking to optimize member engagement, improve operational efficiency, or track revenue performance, our solutions are designed to simplify your processes and maximize your results. With features like advanced reporting, AI-powered analytics, and customizable dashboards, Data Insights ensures your organization is always one step ahead.

If you're new to MemberClicks, explore what Data Insights can do for your organization:

[Watch the Data Insights Overview Video](#)

[Schedule a Demo Today](#)

Already a MemberClicks Trade client? Learn how to make the most of Data Insights:

[Access Data Insights Activation Guide](#)

Need Help with a Data Cleanup Project?

[Connect with Our Professional Services Team](#)

No matter where you are in your data journey, MemberClicks is here to help you **turn information into action**, making sure that your organization has the tools it needs to thrive.

Thanks for reading!

Connect with Us



www.MemberClicks.com



[@MemberClicks](https://www.facebook.com/MemberClicks)



info@memberclicks.com



[@MemberClicks](https://www.linkedin.com/company/MemberClicks)



References:

Sirius Decisions, "The Impact of Bad Data on Demand Generation," February 2015.

Dun & Bradstreet, "D&B Identity Services," 2002.

Forbes, "The Financial Impact of Bad Data," 2019.