

# Spreadsheets to Success: Upgrade to an AMS!

A GUIDE TO UPGRADE YOUR MEMBERSHIP MANAGEMENT



# Table of Contents

---

- 1** Introduction: Navigating Member Management Challenges
- 3** Section 1: The Limitations of Traditional Spreadsheets
- 5** Section 2: Evolving Needs for Scalability and Data Integrity
- 7** Section 3: Empowering Strategic Growth and Engagement
- 9** Section 4: Maximizing Efficiency Through Automation
- 11** Section 5: Seamless Transition - Embracing an Association Management Software
- 13** Section 6: Introducing MemberClicks -The AMS Solution for Today's Challenges
- 15** Conclusion: Transforming Member Management

# Introduction: Navigating Member Management Challenges

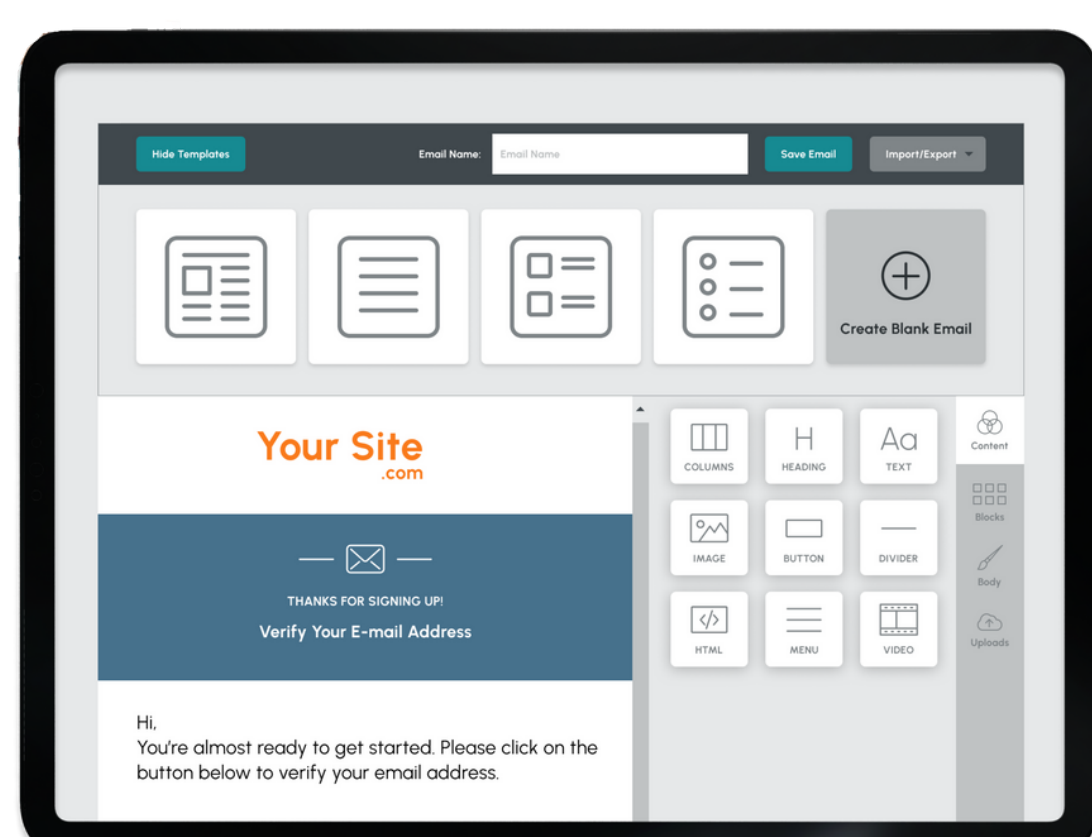
## Welcome to the Next Level of Member Management

In today's world, choosing the right tools for managing members and operations is crucial. The right mix of efficiency, accuracy, and data-driven decisions can significantly influence an organization's success. While spreadsheets have been a go-to solution, the evolving complexity of member management calls for more advanced solutions like Association Management Software (AMS).



## In This Guide, You'll Discover:

- The drawbacks of sticking with traditional spreadsheets.
- The must-have features of modern Association Management Software.
- How automation and smart data usage can simplify your operations.
- Steps for a smooth transition to more sophisticated solution.
- The benefits of upgrading to a comprehensive AMS for strategic growth.

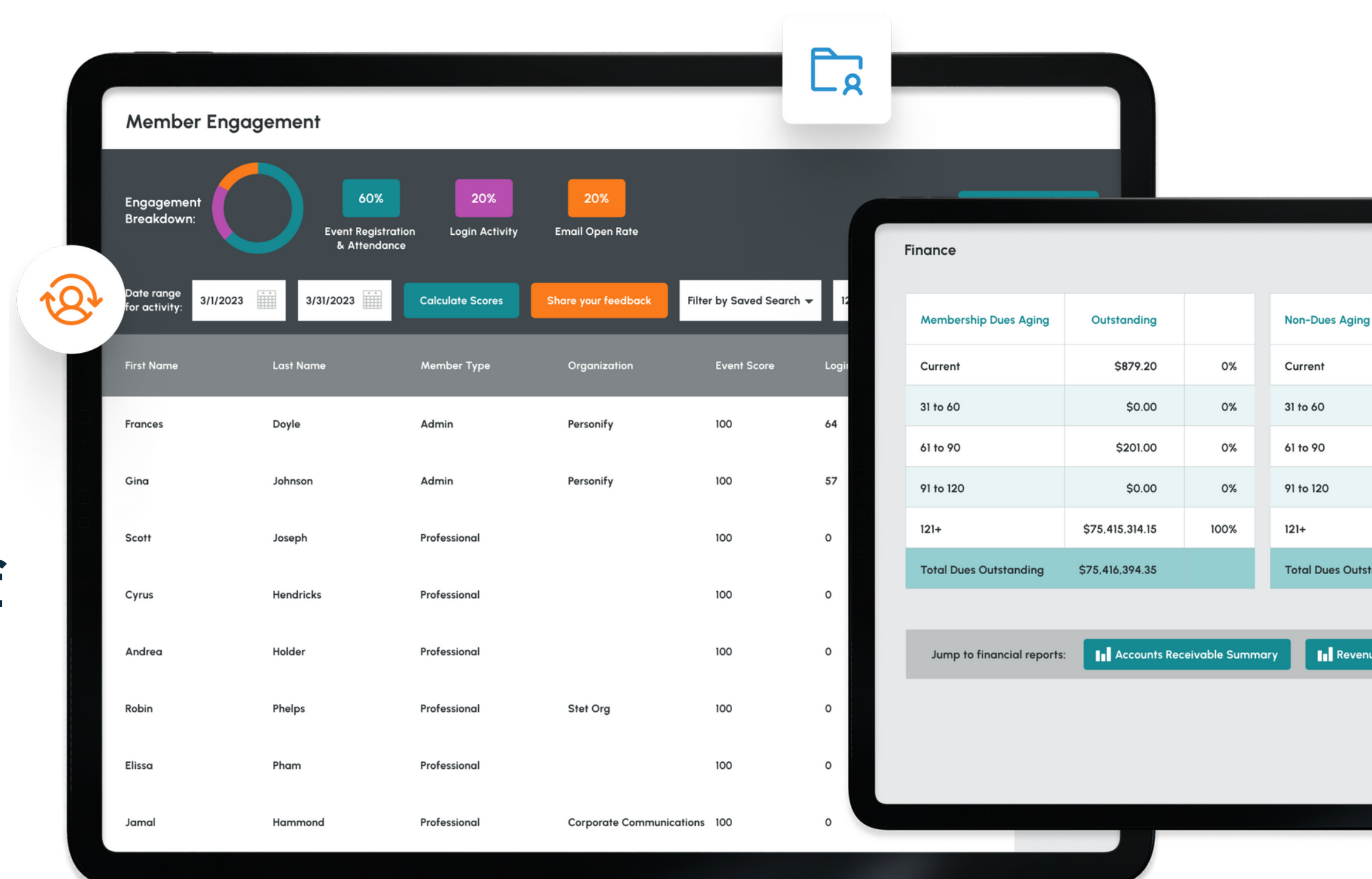


Get ready to explore how upgrading your tools can transform your approach to member management!

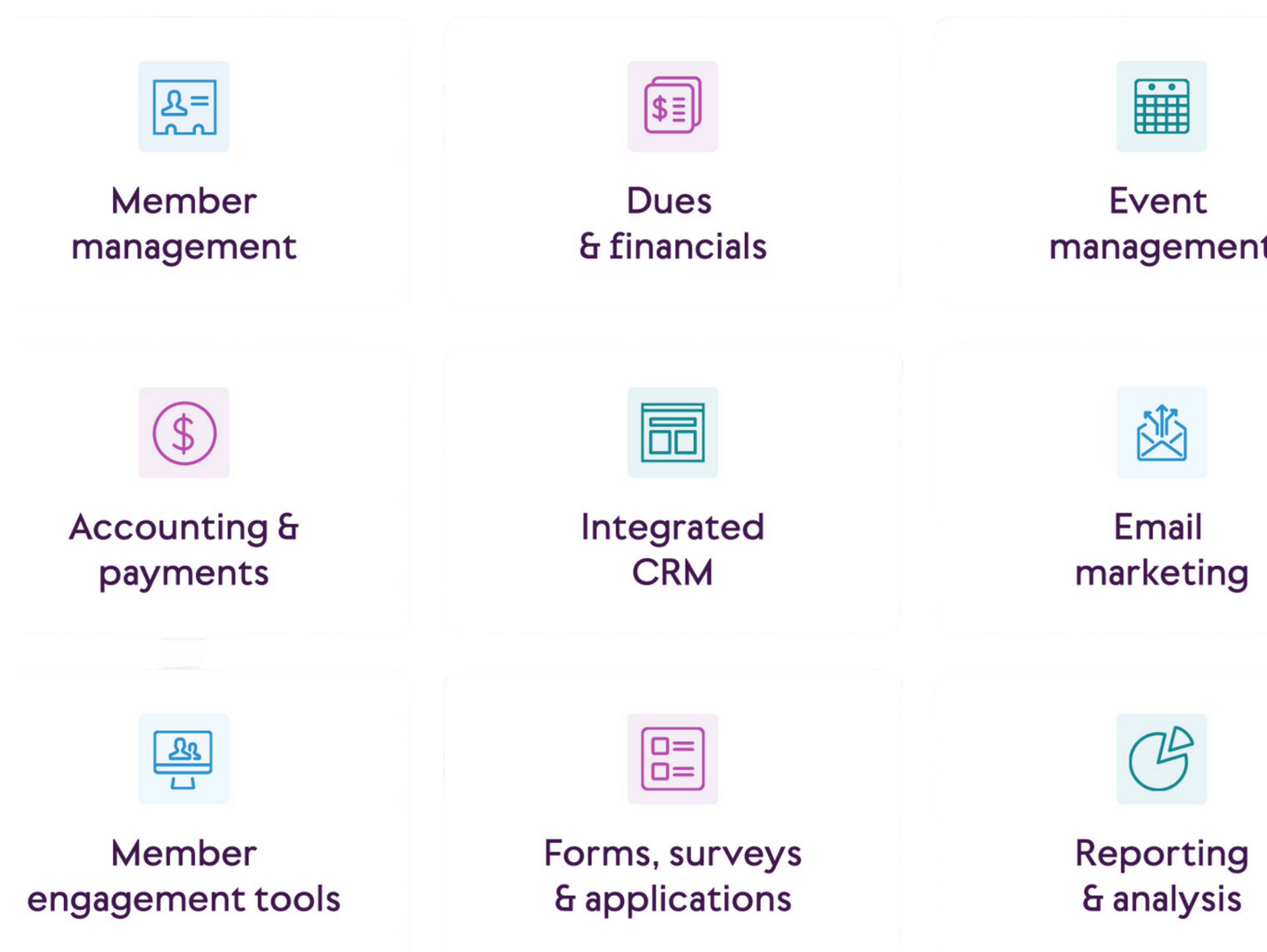
# Before We Start: What is an AMS?

AMS stands for Association Management Software. It's a type of technology - often cloud-based - that is used by associations and other membership organizations.

An AMS is an all-in-one platform that helps staff manage the entire member journey — from recruitment to retention to referrals and beyond, all in one system.



It's like your command center for everything membership related, offering:



## The AMS Advantage:

An AMS like [MemberClicks](#) means embracing a tool that enhances your capacity for strategic decision-making and member engagement. It's about taking a step forward into a more data-driven and member-focused future.

# Section 1: The Limitations of Traditional Spreadsheets

## Why Spreadsheets Can't Keep Up Anymore

Spreadsheets have long been the go-to tool for managing everything from membership lists to event planning. Yet, as organizations grow and needs become more complex, the once-reliable spreadsheet shows its age and limitations.



Let's take a closer look at why spreadsheets are falling behind:



- **Prone to Errors and Time-Consuming:** Manual data entry is slow and often leads to errors, impacting member satisfaction and your organization's reputation.
- **Struggles with Scalability:** Managing a growing amount of member data in spreadsheets can quickly become unwieldy, affecting your ability to serve your members efficiently.

Seeing where spreadsheets fall short helps us realize it's time to move on to something better suited for the job —tools that can keep up with our need to manage members more efficiently.

- **Limited in Automation and Insights:** Spreadsheets lack the capabilities for automating tasks and generating deep insights, essential for strategic planning and engagement.
- **Challenges in Data Consistency:** Ensuring information remains consistent across multiple spreadsheets is difficult, often leading to data discrepancies and an inconsistent member experience.



### Automate repetitive tasks

"With our last system, we had to manually pull renewal lists and send messages. The automatic reminders [in MemberClicks] is a **huge time saver.**"



**Adrian Amos-Honderick**  
Florida Society of Association Executives, Inc.

## Real Stories of Success

Hear from organizations that have switched to an AMS like MemberClicks and haven't looked back. They're seeing better member engagement and running their operations more smoothly than ever. These stories show just how much of a difference the right AMS can make.

[READ MORE CASE STUDIES](#)

# Section 2: Evolving Needs for Scalability and Data Integrity



## Growing Pains: Why Your Member Management Needs More

As your association expands, so do the challenges of keeping everything running smoothly. Spreadsheets and other basic tools start to show their limits, especially when it comes to handling more members and ensuring that all your data stays accurate and secure.

Let's break down why scalability and data integrity are becoming big deals for organizations like yours.



### Keeping Your Data Tight and Right:

- **Staying Accurate:** Good member management is built on having the right information. It's essential for keeping your members engaged in ways that matter to them and making sure your decisions are based on the latest data.
- **Being Consistent Across the Board:** When you're using different systems, it's easy for things to get out of sync. Updates in one place need to show up everywhere, or you risk confusing both your team and your members.
- **Locking It Down:** Data breaches are a nightmare scenario. Protecting your members' information isn't just about avoiding fines; it's about maintaining trust. Plus, staying compliant with laws keeps you on the right side of regulations.


## How an AMS Steps Up:

This is where an AMS comes into play. Software like this is built to tackle the issues of growing member bases and the need for reliable data. With features like:

- **Automated Updates:** Say goodbye to manual data entry. An AMS keeps your information synchronized across all platforms, cutting down on errors and freeing up your time.
- **Powerful Data Management:** Software like this is purpose-built to handle lots of data easily, making sure it's secure and accessible when you need it.
- **Ready to Grow:** The best part? An AMS grows with you. As your association gets bigger, it's ready to adapt, ensuring that scalability and data integrity are always within reach.



| Membership Dues Aging         | Outstanding            |      |
|-------------------------------|------------------------|------|
| Current                       | \$879.20               | 0%   |
| 31 to 60                      | \$0.00                 | 0%   |
| 61 to 90                      | \$201.00               | 0%   |
| 91 to 120                     | \$0.00                 | 0%   |
| 121+                          | \$75,415,314.15        | 100% |
| <b>Total Dues Outstanding</b> | <b>\$75,416,394.35</b> |      |

 In the upcoming sections, we'll dive deeper into how an AMS can revolutionize your member management approach, turning challenges into opportunities.



# Section 3: Empowering Strategic Growth and Engagement

## Unlocking New Opportunities with Smart Data Use

As your association evolves, so does the role of data in shaping its future. Let's explore how leveraging your data smartly can drive growth and deepen member engagement.



### From Data to Decisions:

- **Actionable Insights:** With an AMS, raw data transforms into insights that drive strategic decisions. You gain a clear understanding of member engagement, financial health, and other vital metrics, enabling you to act with confidence.
- **Seeing the Big Picture:** Advanced reporting tools within an AMS offer a comprehensive view of your operations and member trends. This visibility is key to identifying new growth opportunities and areas for improvement.



### Boost Member Engagement:

- **Beyond Data Management:** Switching to an AMS means moving from mere data management to active member engagement. By using targeted and personalized communication, you can create more meaningful connections with members.
- **Satisfaction and Retention:** Enhanced engagement strategies lead to increased member satisfaction and retention. Happy members are more likely to stay involved and support your organization's growth.

## Fostering Organizational Growth:

- **Identifying Opportunities:** An AMS provides the tools to not only understand your current member base but also to identify pathways for expansion. Whether it's through new programs, services, or outreach efforts, the insights from your AMS are invaluable.
- **Strategic Expansion:** Armed with data, your organization can confidently develop strategies to broaden its impact and reach. This strategic approach to growth is what sets leading organizations apart.
- **Efficient Board Collaboration:** Simplify how you report and strategize growth with the board. With easy access to crucial data, you can swiftly secure board approval for new initiatives, ensuring everyone is aligned and informed.

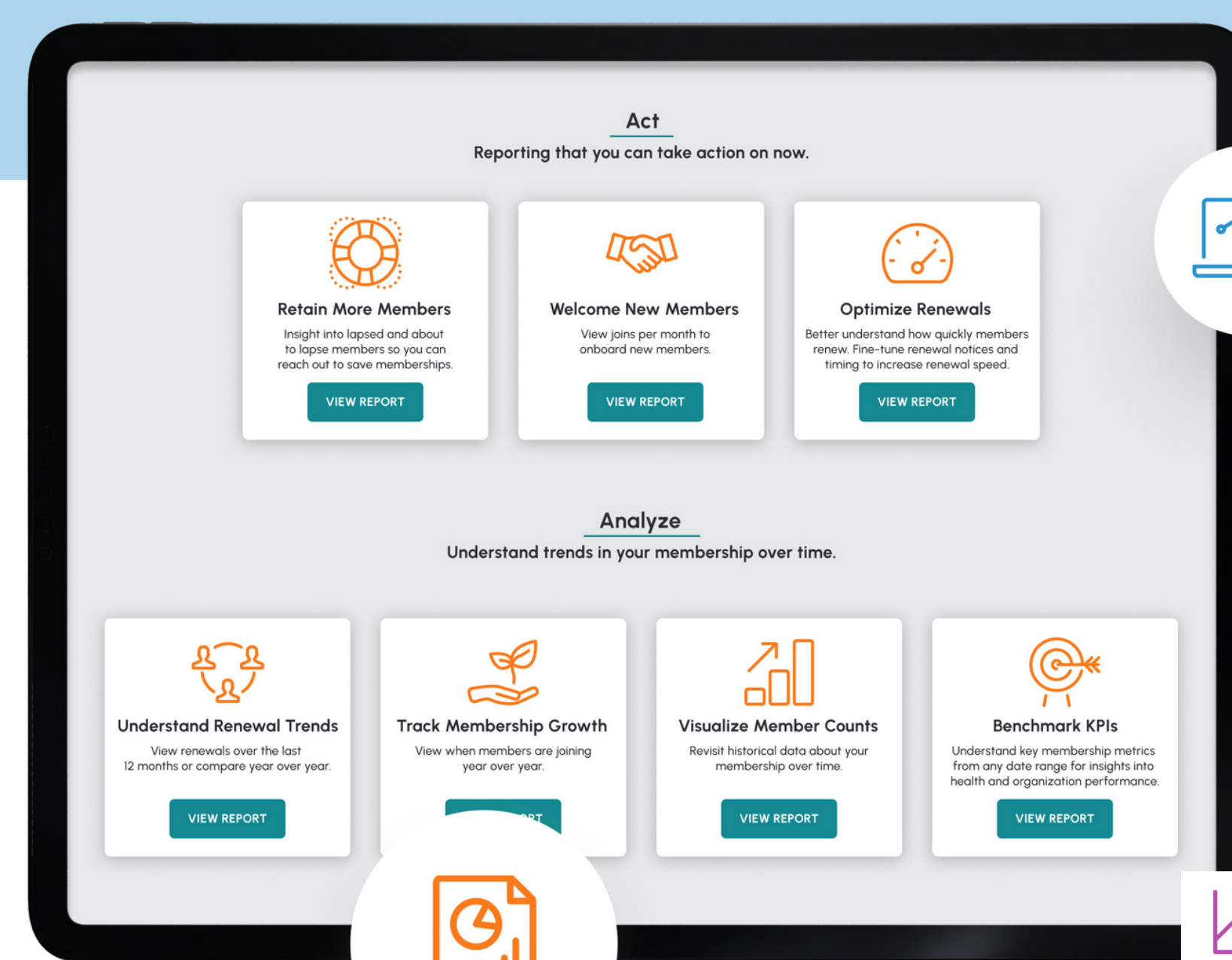


### Easily access key insights and data

"The biggest benefit [of MC Professional] is **having data, and tracking data**. Previous programs and software... they didn't have good tracking. We can pull information fast."



**Jennifer Batista**  
Home Care Association of America



### Easily access key insights and data

"MC Trade has **maximized our efficiency**. It's extremely easy to do my job because everything is in one place."



**Elizabeth Addington**  
Arlington Chamber of Commerce

# Section 4: Maximizing Efficiency Through Automation


## Streamlining Your Work with Smart Automation

A major advantage of using Association Management Software is how it simplifies your workload. Instead of juggling separate spreadsheets for different tasks, an AMS brings everything into one place.

Let's see how automation and consolidation make your operations smoother and more efficient.


### Bringing It All Together:

- **Unified Member Management:** Imagine having all your member-related tasks — from keeping databases updated to planning events, and handling communications and billing — all in one system. This not only makes life easier but also cuts down on the costs of using several different tools.




**Visualize Member Counts**  
Revisit historical data about your membership over time.

[VIEW REPORT](#)



**Optimize Renewals**  
Better understand how quickly members renew. Fine-tune renewal notices and timing to increase renewal speed.

[VIEW REPORT](#)



**Benchmark KPIs**  
Understand key membership metrics from any date range for insights into health and organization performance.

[VIEW REPORT](#)

You have 3 open invoices

[PAY INVOICES](#)



### The Power of Automation:

- **Enhancing Member Engagement:** Automated event reminders and updates keep your organization's activities front and center for your members which helps maintain a strong connection and encourages active participation.



- **Free Up Your Time:** With an AMS, routine yet crucial tasks such as sending out membership renewal notices, event reminders, or newsletters happen automatically. This means your team can spend more time on big-picture projects instead of getting caught up in day-to-day tasks.
- **Fewer Mistakes:** Automation isn't just about saving time; it's also about doing things right. When you automate tasks, you also reduce the chances of human error, which means your data is more accurate and reliable.



## Cost Savings Across the Board:



- **Reducing Operational Costs:** Streamlining and automating processes with an AMS can significantly lower the time and resources spent on manual management, translating into direct cost savings.
- **Substantial Savings:** Subscribing separately to services like MailChimp, event management tools, and other software can be costly. An AMS consolidates these needs, offering a cost-effective solution that can significantly reduce expenses for your organization.
- **Reinvesting in Growth:** The resources saved can be redirected towards initiatives that directly contribute to your organization's growth and member satisfaction, maximizing impact and ROI.



# Section 5: Seamless Transition - Embracing an Association Management Software

## A Smooth Shift to Superior Member Management

Switching to an Association Management Software (AMS) is a big step forward for any organization. It's about upgrading from the basics to something that can truly grow with you and enhance how you connect with members.

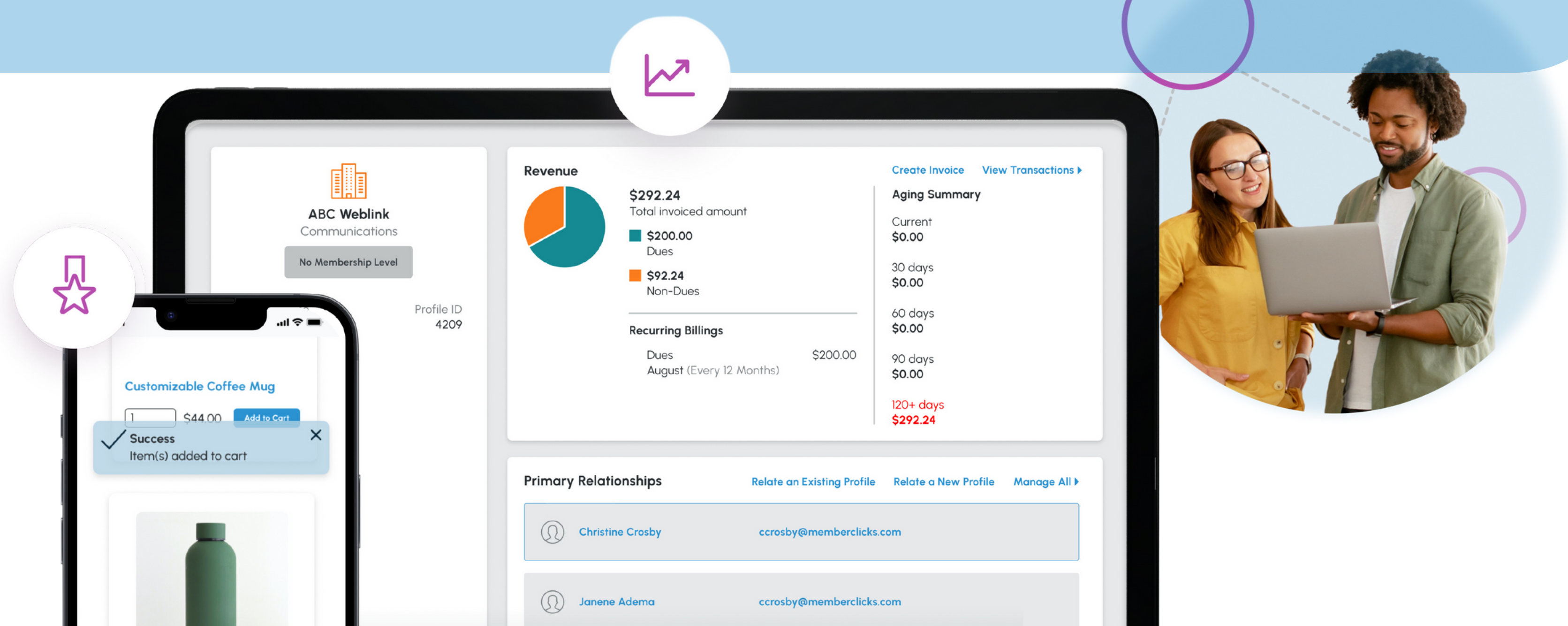
Let's talk about how this transition can be smooth, ensuring you get the best out of your new software without losing any of your valuable existing data.



### Navigating the Transition:

- **Building on What You Have:** The good news is, moving to an AMS doesn't mean starting from scratch. Your existing Excel data forms the base of your new software. It's not about discarding your data but elevating it, making the transition familiar yet significantly more powerful.
- **Safe and Efficient Data Migration:** With a dedicated team by your side, your data moves safely from those spreadsheets to the AMS. This step is all about ensuring no data gets lost in translation, setting up a solid foundation in your new software.

- **Getting Up to Speed:** Transitioning isn't just about moving data; it's also about making sure you and your team know how to make the most of your new AMS. Comprehensive training and support mean you're never left figuring things out on your own.
- **Tailoring to Your Needs:** Every organization is unique, and so are your needs. Configuring your AMS to fit those needs, and ensuring it works well with any other tools you're using, is a key part of the process. This configuration ensures that your AMS is not just a new tool but a perfect fit for your organization.



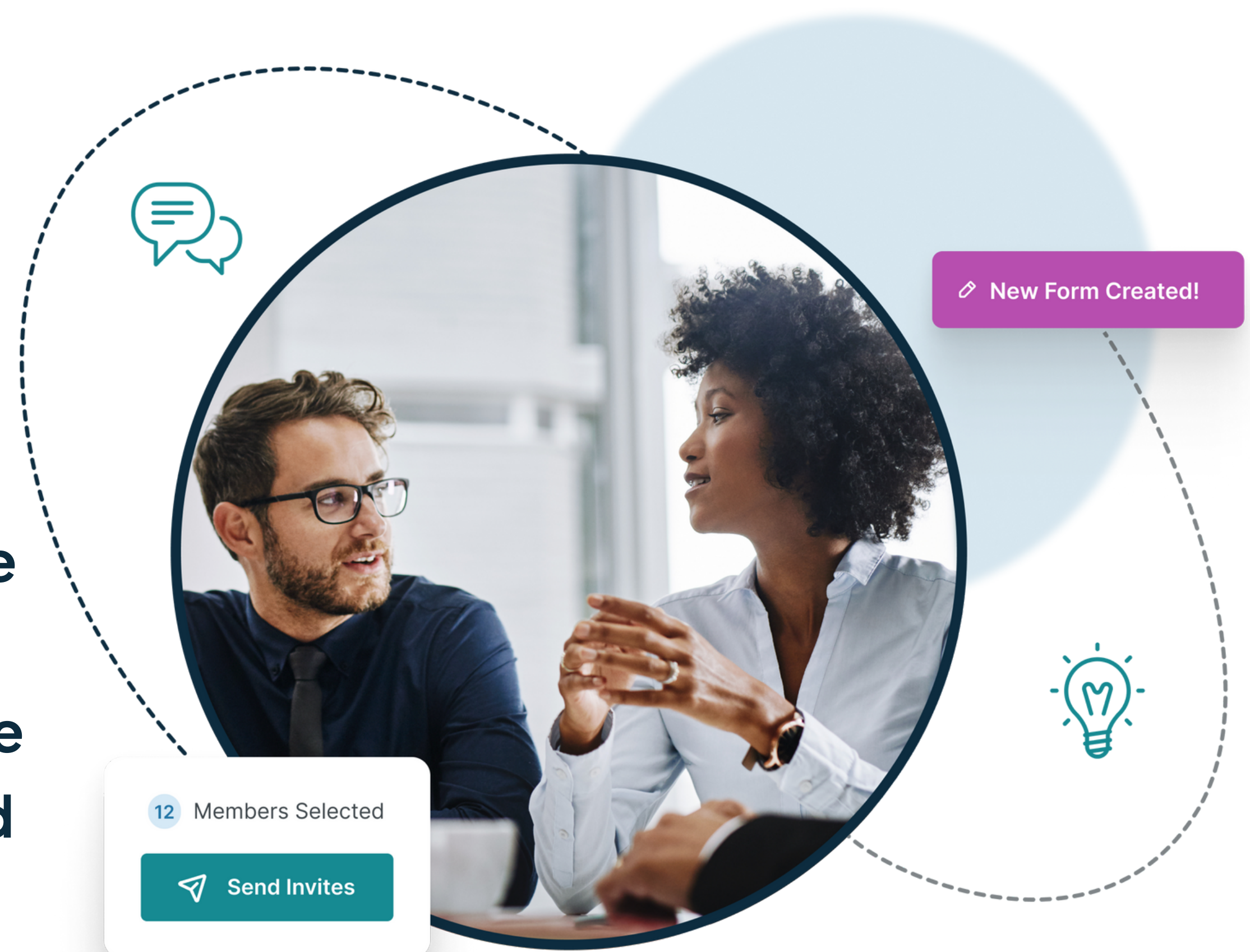
## Transition Benefits:

- **Confidence in Your Data:** Transitioning with a plan means you can trust your member data is accurate and up to date in your new software.
- **Software That Grows with You:** An AMS is designed to scale with your organization, ensuring you're always ready for what's next.
- **Focus on What Matters:** With the heavy lifting of data management off your shoulders, your team can focus more on strategic initiatives that drive growth and engagement.

# Section 6: Introducing MemberClicks - The AMS Solution for Today's Challenges

## Taking Member Management to the Next Level with MemberClicks

Switching from traditional spreadsheet management to [MemberClicks](#) is a big change in how organizations interact with and manage their members. As a full-featured Association Management Software, MemberClicks is made to meet the specific needs of associations and member-based organizations, providing a range of solutions that greatly improve operational efficiency and member engagement.



### Designed Just for You:

- **Everything You Need, All in One Place:** MemberClicks gets it – you need features that fit exactly what your organization does. From keeping track of all your members to making your events a hit, it's all tailored to make your member management smooth and effective.
- **Handling Big Data? No Problem:** Forget the headaches of dealing with huge amounts of data in spreadsheets. MemberClicks makes managing all your member info easy, so you can focus on growing your organization without worrying about your software keeping up.



## Simplifying Tasks with Automation:

- **Let the Software Do the Work:** From renewing memberships to sending out event invites, MemberClicks automates the routine stuff. This means fewer mistakes and more time for you to focus on what really matters – your members.



## Insights that Lead to Action:

- **Make Smart Decisions, Faster:** With MemberClicks, you're not just collecting data – you're using it. Get insights on how to better engage your members and see where your organization is headed, all through easy-to-use reporting tools.



**Membership** 01/01/2022 through 01/01/2022

| Show All Levels            | New Members | New Investments | Dropped Members | Lost Investment | Gain (Loss) | Gain (Loss) Investment | Total Members |
|----------------------------|-------------|-----------------|-----------------|-----------------|-------------|------------------------|---------------|
| Membership Activity Totals | 31          | \$14,872.00     | 1               | \$0.00          | 30          | \$14,872.00            | 823           |

**Retention**

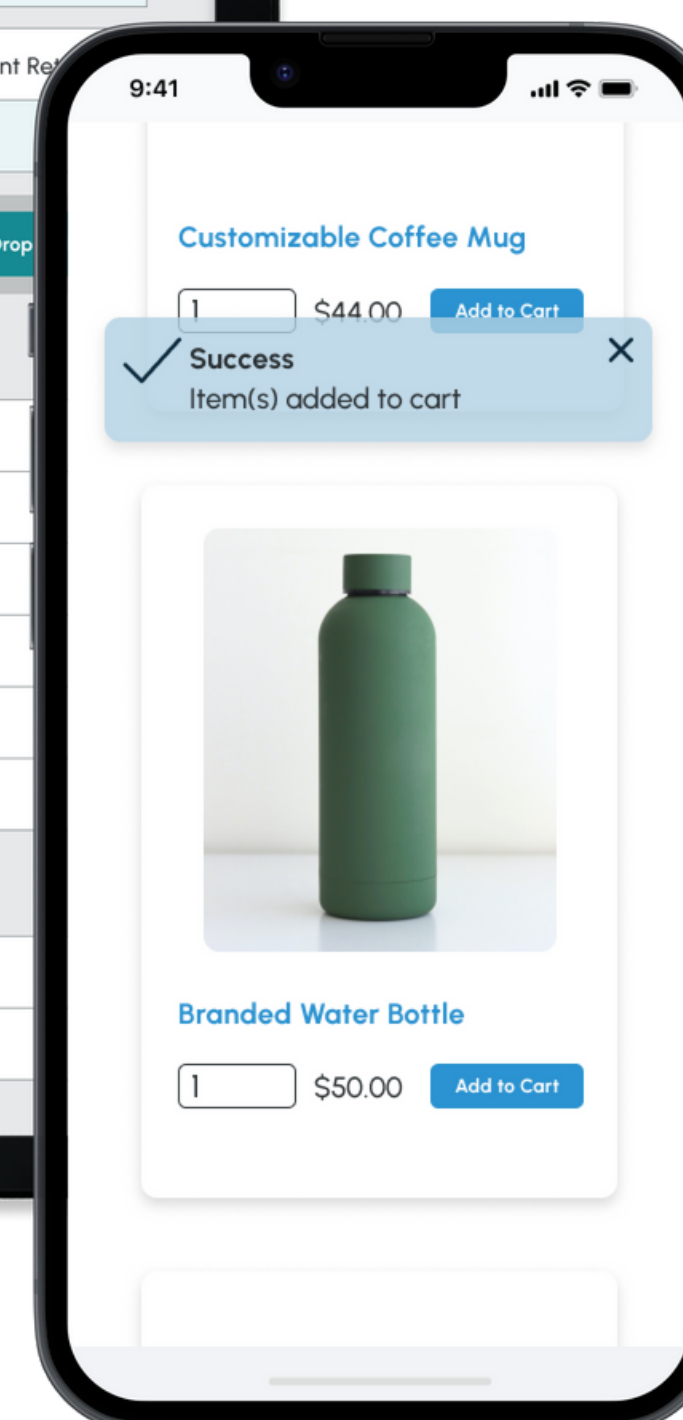
| Show All Levels  | Members Billed | Members Paid | Member Retention | Amount Billed | Amount Paid | Investment Retention |
|------------------|----------------|--------------|------------------|---------------|-------------|----------------------|
| Retention Totals | 74             | 0            | 0%               | \$28,645.00   | \$0.00      |                      |

**Upcoming Events**

| Date   | Attendees | Revenue    |
|--|-----------|------------|
| Summer Speaker Series 7/14/2022 8:30 AM - 7/17/2022 12:00 Noon | 7         | \$2,012.50 |
| 2022 Leadership Week 7/31/2022 8:30 AM - 8/5/2022 5:00 PM      | 1         | \$750.00   |
| Business Development 101 8/9/2022 8:00 AM - 12:00 Noon         | 1         | \$60.00    |
| Summer Golf Outing 8/25/2022 12:00 Noon - 8/27/2022 4:00 PM    | 0         | \$0.00     |
| Annual Meeting 2022 12/11/2022 7:00 AM - 12/14/2022 4:00 PM    | 0         | \$0.00     |

**Finance**

| Membership Dues Aging | Outstanding | Non-Dues Aging | Outstanding |
|-----------------------|-------------|----------------|-------------|
| Current               | \$0.00      | 0%             | \$1,060.00  |



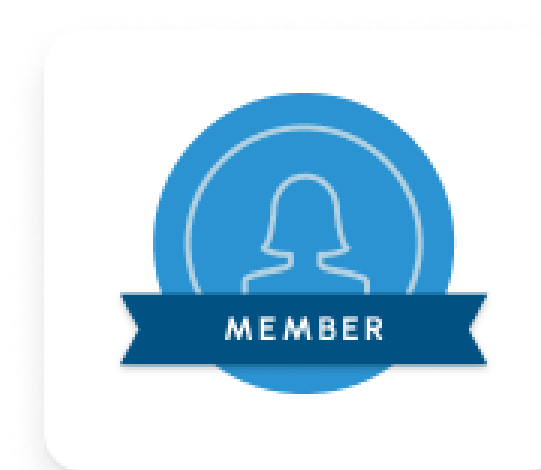
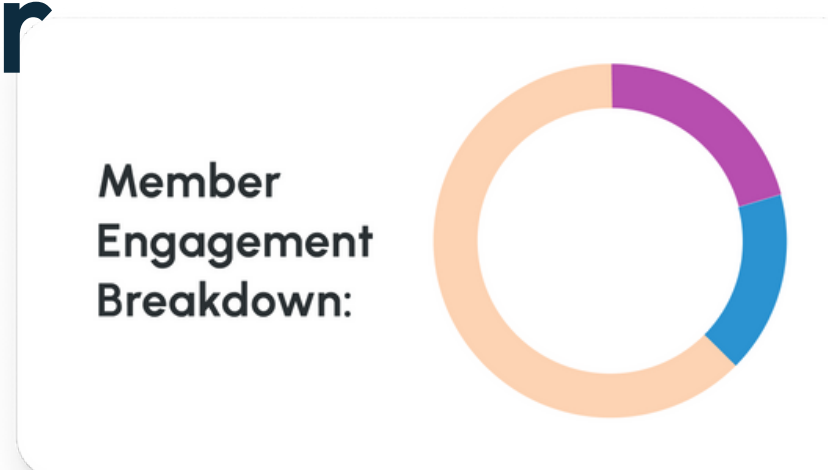
MemberClicks changes the game by offering efficiency and insights that just aren't possible with traditional tools like Excel.



# Conclusion: Transforming Member Management with an AMS like MemberClicks

## Embracing a New Chapter in Member Management

In this guide, we've outlined how traditional tools such as spreadsheets and Excel are increasingly falling short in meeting the needs of organizations for effective member management. The move towards a more sophisticated solution, with an AMS like MemberClicks, represents not just a change in tools but also how to approach and value member engagement and organizational efficiency.

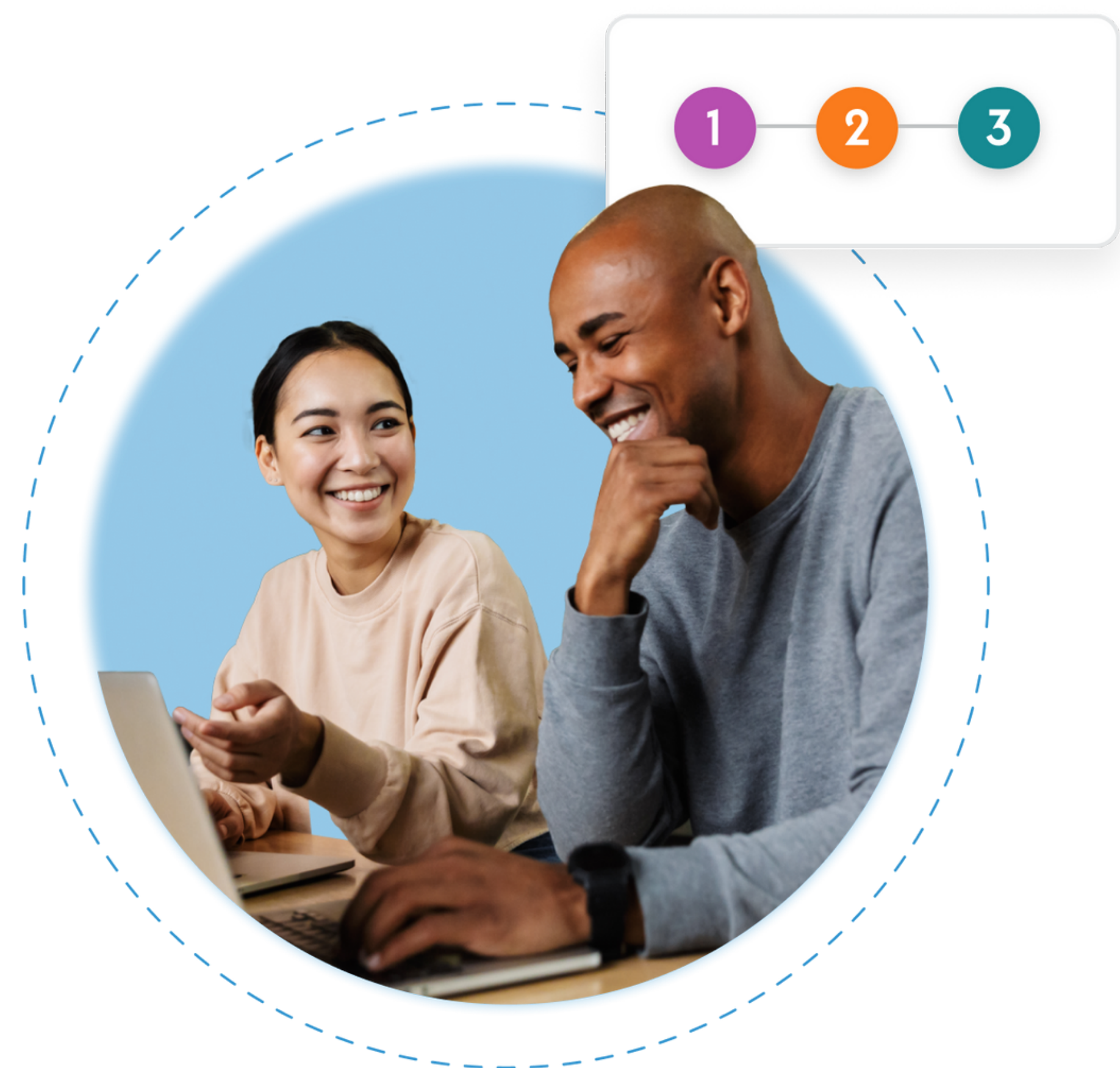


### Highlighting the Benefits:

- **Efficiency and Automation:** We've seen how an AMS can streamline your operations, automate the mundane, and free up your time for what truly matters—engaging with your members and focusing on strategic growth.
- **Scalability and Data Integrity:** An AMS grows with you, maintaining the accuracy and reliability of your data, ensuring you can make informed decisions no matter how large your organization becomes.
- **Strategic Growth:** The capacity of an AMS to provide advanced reporting and enhance member engagement is a game-changer. It allows for data-driven decisions that forge stronger member relationships and drive your organization's growth.

## Your Next Steps:

This guide is just the beginning. The true potential of an AMS like MemberClicks unfolds when you experience it firsthand. We invite you to [reach out and schedule a demo](#) today, to see how it can transform your member management! Time to take the first step towards a more efficient, engaged, and growth-focused future!



## See MemberClicks in action

Learn how MemberClicks helps 3,000 organizations just like yours manage their complex financials -- without the headaches!

[Book a demo](#)

## Connect with Us



[www.MemberClicks.com](http://www.MemberClicks.com)



[@MemberClicks](#)



[info@memberclicks.com](mailto:info@memberclicks.com)



[@MemberClicks](#)



**THANKS FOR  
READING!**